

TENDER BULLETIN

NO. 08/2016/17 FY

27MAY 2016



LIMPOPO

PROVINCIAL GOVERNMENT
REPUBLIC OF SOUTH AFRICA

This document is also available on the internet on the following website:

www.limtreasury.gov.za

Provincial Supply Chain Management Office

TABLE OF CONTENTS

	Page No.
1. REPORTING FRAUDULENT AND CORRUPT ACTIVITIES.....	03
2. INSTRUCTIONS.....	04
3. BID INVITATIONS FOR SUPPLIES, SERVICES AND DISPOSALS	05-08
5. SPECIAL NOTICES.....	09– 10
ANNEXURE 1: ADDRESS LIST AND CONTACT DETAILS: PROVINCIAL DEPARTMENTS.....	11
ANNEXURE 2: ADDRESS LIST AND CONTACT DETAILS: PUBLIC ENTITIES.....	12
ANNEXURE 3: ADDRESS LIST AND CONTACT DETAILS: PROVINCIAL TREASURY TENDER ADVICE CENTRES	13
ANNEXURE 4: ADDRESS LIST AND CONTACT DETAILS: SATELLITE OFFICES	14

REPORT

FRAUDULENT & CORRUPT ACTIVITIES ON GOVERNMENT PROCUREMENT SYSTEM

National Anti-Corruption @ 0800 701 701

Security and Investigating Services – Limpopo Provincial Treasury

@ 015 298 7196

ALL COMPLAINTS/CONCERNS RELATED TO SCM NON-COMPLIANCE MUST BE REPORTED TO:

THE SENIOR MANAGER

LIMPOPO PROVINCIAL TREASURY

PRIVATE BAG X 9486

POLOKWANE

0700

Tel No: 015 291 8705

ATTENTION: MAHLATJI MD

OFFICE NO. 216

OFFICE HOURS: 7H30-16H30

PROVINCIAL TREASURY, FINANCE HOUSE

56 – 58 PAUL KRUGER STREET

POLOKWANE

2. INSTRUCTIONS

1. Bidders are advised to read the entire tender bulletin.
2. Tenders for procurement of supplies, services and disposals are categorized as follows:

SUPPLIES

- Accommodation, leasing of
- Audio visual equipment
- Building material
- Chemicals: Agricultural/Forestry/
Laboratory/Water Care
- Clothing/Textiles
- Computer equipment
- Computer software
- Electrical equipment
- Electronic equipment
- Furniture
- General
- Medical
- Office equipment: Labour-saving
devices
- Perishable provisions
- Stationary/printing
- Steel
- Timber
- Vehicle (all types)
- Workshop equipment

SERVICES

- Building
- Civil
- Electrical
- Functional (including cleaning-,
and security services)
- General
- Maintenance of electrical, mechanical
equipment and plumbing
- Mechanical
- Professional
- Repair and maintenance of vehicles
- Transport

DISPOSALS

- Clothing and textiles
- Furniture
- General
- Scrap metal
- Vehicles

3. Bid documents are generally available in English only.
4. The address where a bid document is available from and where it must be submitted to may differ.
5. The addresses at which bid documents may be obtained and to which tenders must be posted, appear in Annexure 1.
6. The address list of various Supply Chain Management Tender Advice Centers at which bid documents and tender bulletins may also be obtained, appear in Annexure 3; and
7. The address list of Supply Chain Management satellite offices at which tender bulletins may also be obtained, appear in Annexure 4

3. BID INVITATIONS FOR SUPPLIES, SERVICES AND DISPOSALS

BID NO.	DESCRIPTION OF SERVICE OR SUPPLIES	CONTACT DETAILS	BID DOCUMENT PRICE (NON-REFUNDABLE)	DUE AT 11H00	BID DOCUMENTS OBTAINABLE FROM	POST OR DELIVER BIDS TO
					See Annexure 1 & 2 Page 09 – 10	
COGHSTA B02/2016-17FY	<p>Geotechnical engineering firms to conduct geotechnical investigation phase1 and phase 2 in line with minimum requirements in accordance with the geotechnical site investigations for housing development, generic specification (GFSH-2, GFSH-6 and GFSH-8), Design foundations for houses and provide remarks on flood line in Limpopo Province for three years starting from 2016/17 to 2018/19 FY</p> <p>Compulsory Briefing session: Will be held on Tuesday, 14 June 2016 at 10H at MEC Board Room 637, 6TH floor , Hensa Towers Cnr. Rabe and Landros Mare Street, Polokwane</p> <p>Department of Co-operative Governance, Human Settlement and Traditional Affairs</p>	<p>BIDDING PROCESS Mr Mokalapa MJ at 015 294 2155, Ms Peta MM at 015 2942154 or Mr Magagane MC at 015 2942155</p> <p>TECHNICAL ASPECTS Mr. Mashiane MJ at 015-2845094, Mr Myantona S At 015 2845128, Ms Budeli MS at 015 284 5355 or Mr Lamola RM at 015 2845111</p>	R 80 – 00	29/06/2016	107	107
COGHSTA B03/2016-17FY	<p>Appointment of service provider for services of engineering consultants to conduct geotechnical investigations and install engineering services</p> <p>Compulsory Briefing session: Will be held on Wednesday 15 June 2016 at 10H at MEC Board Room 637, 6TH floor , Hensa Towers Cnr. Rabe and Landros Mare Street,</p>	<p>BIDDING PROCESS Mr Mokalapa MJ at 015 294 2155, Ms Peta MM at 015 2942154 or Mr Magagane MC at 015 2942155</p> <p>TECHNICAL ASPECTS Mr. Mashiane MJ at 015-2845094 Mr Myantona S At 015 2845128, Ms Budeli MS at 015 284 5355 or Mr RM Lamola at</p>	R 80 – 00	30/06/2016	107	107

	<p>Polokwane</p> <p>Department of Co-operative Governance, Human Settlement and Traditional Affairs</p>	015 2845111				
ACDP 15/22	<p>Supply and delivery of 18 Ton Bulldozer equipped with a Power Angle Tilt (PAT) blade for Limpopo Department of Agriculture and Rural Development</p> <p>Compulsory Briefing session:</p> <p>Date: 09 June 2016 Time: 10H00 Venue: Temo Towers , 4th Floor Board Room, 67 Biccard Street Polokwane</p> <p>Department of Agriculture and Rural Development</p>	<p>BIDDING PROCESS</p> <p>Me Mononyane NM @ 015 2943434 or by email at mononyanenm@agric.limpopo.gov.za</p> <p>TECHNICAL ASPECTS</p> <p>Mr. Kgosana MJ @015 2943544 or by email at kgosanam@agric.limpopo.gov.za</p>	R80.00	22/06/2016	111	111
PUDP741A	<p>Supply, delivery and installation of concrete palisade fence (2.4m high) including razor wire at Mooketsi Weigh- Bridge (600m) in the Mopani District of Limpopo Province</p> <p>CIBD grading of 3GB or higher</p> <p>Compulsory Briefing session:</p> <p>Date: 07 June 2016 Time: 10H:30 Venue: Mooketsi Weigh-bridge located at the intersection of roads R81 and R36 (GPS Co-ordinates S°:23 36" 13" and E°: 30 04"29")</p> <p>Department of Transport</p>	<p>BIDDING PROCESS</p> <p>Ms. Masha E @ 015 2951013</p> <p>TECHNICAL ASPECTS</p> <p>Mr. Masupa Ngwako @ 015 2951010</p>	R300.00	28/06/2016	105	105
PUDP741B	<p>Supply, delivery and installation of concrete palisade fence (2.4m high) including razor wire at Rathoke Weigh- Bridge (495m) in the Sekhukhune District of Limpopo Province</p> <p>CIBD grading of 3GB or higher</p> <p>Compulsory Briefing session:</p> <p>Date: 09 June 2016 Time: 10:30H</p> <p>Venue: Rathoke Weigh- bridge located at the intersection of</p>	<p>BIDDING PROCESS</p> <p>Ms. Masha E @ 015 2951013</p> <p>TECHNICAL ASPECTS</p> <p>Mr. Masupa Ngwako @ 015 2951010</p>	R300.00	28/06/2016	105	105

	roads R33 and N11 (GPS Co-ordinate: S°:24 53" 34" and E°:29 10" 18") Department of Transport					
PUDP741C	Supply, delivery and installation of concrete palisade fence (2.4m high) including razor wire at Mampakuil Weigh- Bridge (520m) in the Vhembe District of Limpopo Province CIBD grading of 3GB or higher Compulsory Briefing session: Date: 07 June 2016 Time: 14 H00 Venue: Mampakuil Weigh-bridge along the NI to Makhado (GPS Co-ordinates: S°:28 .08" 59" and E°:29 53" 06" Department of Transport	BIDDING PROCESS Ms. Masha E @ 015 2951013 TECHNICAL ASPECTS Mr. Masupa Ngwako @ 015 2951010	R300.00	27/06/2016	105	105
PUDP741D	Supply, delivery and installation of concrete palisade fence (2.4m high) including razor wire at Groblersburg Weigh- Bridge (500m) in the Waterberg District of Limpopo Province CIBD grading of 3GB or higher Compulsory Briefing session: Date: 08 June 2016 Time: 10H.30 Venue: Temo Towers , 4th Floor Board Room,67 Biccard Street Polokwane Department of Transport	BIDDING PROCESS Ms. Masha E @ 015 2951013 TECHNICAL ASPECTS Mr. Masupa Ngwako @ 015 2951010	R300.00	27/06/2016	105	105
RAL/2016MULTIFUNCTIONAL PRINTERS/RF B002	Appointment of service provider to lease multifunctional printer to Roads Agency Limpopo for the period of three years Road Agency Limpopo	BIDDING PROCESS Mr. Matsobane Dinala @ 015 2844628 or 0824650812 and email: dinalamr@ral.co.za TECHNICAL ASPECTS Mr. Legodi KC @ 015 2844659 or 0824471891 email:legodikc@ral.co.za	R80.00	20/06/2016	117	117

4. BID INVITATIONS CANCELLED

T/ENDER BULLETIN NO.	BID NO	PROJECT DESCRIPTION	DATE ADVERTISED	DATE CLOSED	REASON FOR CANCELLATION
CANCELLATION OF BID HEDP 062/15: SUPPLY AND DELIVERY OF OPTICAL DEVICES/SPECTACLES					
29 OF2015/16FY	HEDP 062/15	Supply and delivery of optical device/spectacles Department of Health	30/10/2015	27/11/2015	All bid offers received were none responsive

4. SPECIAL NOTICES

ERRATUM
FACILITY MANAGEMENT
Bid No: GAAL/028/2016/2017

Please be advised that the above bid has been changed and it should read as follows: **Request for proposal are hereby invited for the Facility Management for Gateway Airport Authority Limited.** Bidding documents shall be available from the Supply Chain Management Unit at Gateway Airport Authority Limited Admin Office N1 North to Makhado from **26 May 2016** during office hours from **07h30 - 15h00 weekdays**. Request for Proposal for Facility Management will be available upon payment of **R 1500.00** which is non-refundable. There will be a compulsory briefing session on the **31th May 2016 at 10h00** at the GAAL ADMIN

Completed tenders in Black ink, in a sealed envelope and clearly marked "**Request for proposal Number and Description "Gaal/027/2016/2017: REQUEST FOR PROPOSALS**" be placed in the Tender Box, situated at the GAAL Admin Office, Security Building, Polokwane International Airport, not later than **13 June 2016 at 11h00**.

Request for proposal for Facility Management shall remain valid for a period of 90 days from closing date and No late, faxed, e-mailed or other form of tender will be accepted.

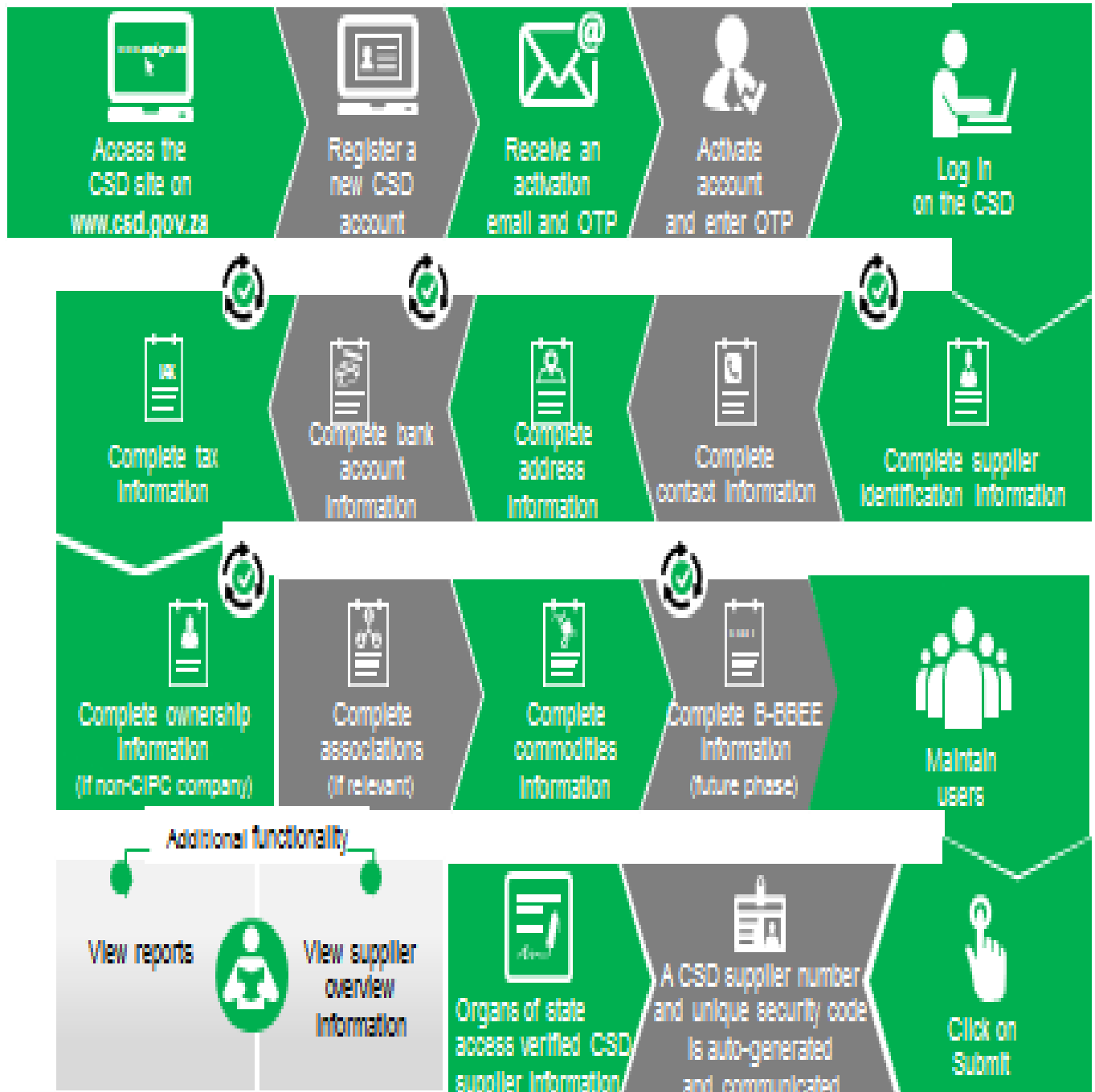
For Procurement Enquiries: **SCM Office at (015) 288 0122** and for **Technical enquires on (015) 288 0122**. Request for proposal will be evaluated in terms of the Supply Chain Management Policy of the Gateway Airport Authority Limited where Price and B-BBEE preferences and 90/10 points system will be applied as follows;

90= Price

10= B-BBEE Status Level of Contribution

Gateway Airport Authority Limited fully Reserves the right not accept the lowest tender or accept the whole or part of any tender or not to consider any tender submitted.

Supplier Self-Registration Process



Ⓜ Auto verification of supplier information with SARS, CIPC etc.

ANNEXURE 1: ADDRESS LIST AND CONTACT DETAILS: LIMPOPO PROVINCIAL DEPARTMENTS

UNIQUE REF. NO.	BID DOCUMENT REFERENCE	CONTACT DETAILS	DOCUMENTS SOLD AT:	DOCUMENTS DEPOSITED AT
100	DSDP	Tel: 015 293 6000 Fax: 015 293 6211 Website: www.limpopo.gov.za	Department of Social Development , Office No. D3 Ground Floor, Old Capricorn Building, 18 College Street, POLOKWANE and all Provincial Treasury Tender Advice Centers	Deposited in the box located at Department of Health and Social Development, 18 College Street, Polokwane
101	LPT	Tel: 015 298 7000 Fax: 015 295 7010 Website: www.limpopo.gov.za	Provincial Treasury 56 – 58 Paul Kruger Street, POLOKWANE and all Provincial Treasury Tender Advice Centers	Deposited in the bid box located outside a guard house at Ismini Towers, 46 Hans Van Rensburg Street, Polokwane
101A	TC/LP	Tel: 015 291 8400 Fax: 015 295 3310 Website: www.limpopo.gov.za	Provincial Treasury 56 – 58 Paul Kruger Street, POLOKWANE and all Provincial Treasury Tender Advice Centers	Deposited in the bid box located in the main entrance, Finance House Building, 56-58 Paul Kruger Street, Polokwane
102	PRDP	Tel: 015 287 6000 Fax: 015 295 3840 Website: www.limpopo.gov.za	Office of the Premier , 40 Hans van Rensburg Street, POLOKWANE and all SCM Advice Centers	Deposited in the bid box located at Mowaneng Building, 40 Hans van Rensburg Street, Polokwane
103	HEDP	Tel: 015 293 6000 Fax: 015 293 6211 Website: www.limpopo.gov.za	Department of Health , Office No. D3 Ground Floor, Old Capricorn Building, 18 College Street, POLOKWANE and all Provincial Treasury Tender Advice Centers	Deposited in the box located at Department of Health and Social Development, 18 College Street, Polokwane
104	LPEDT	Tel: 015 290 7600/1 Fax: 015 297 4494 Website: www.limpopo.gov.za	Department of Education , Corner 113 Biccadd and 24 Excelsior Streets, POLOKWANE and all Provincial Treasury Tender Advice Centers	Deposited in the bid box located in the main entrance of corner 113 Biccadd Street and Excelsior Street, Polokwane
105	PUDP	Tel: 015 295 1000 Fax: 015 295 1163 Website: www.limpopo.gov.za	Department of Roads & Transport , 40 Paul Kruger Street, POLOKWANE and all Provincial Treasury Tender Advice Centers	Deposited in the bid box located at 1 st Floor, Paul Kruger Wing, 40 Paul Kruger Street, Polokwane
106	DSSL	Tel: 015 290 2900 Fax: 015 291 4452 Website: www.limpopo.gov.za	Department of Safety, Security and Liaison , 32 Schoeman Street, POLOKWANE and all Provincial Treasury Tender Advice Centers	Deposited in the bid box located in the main entrance of 32 Schoeman Street, Polokwane
107	COGHSTA	Tel: 015 294 2000 Fax: 015 295 4190 Website: www.limpopo.gov.za	Department of Co-Operative Governance, Human Settlements & Traditional Affairs , 28 Market Street, Office No. G 74, Ground Floor, Polokwane.	Deposited in the bid box located at Hensa Towers, Cnr of Rabe and Landdros Mare Streets, Polokwane
108	DSAC	Tel: 015 284 4000 Fax: 015 284 4514 Website: www.limpopo.gov.za	Department of Sport, Arts and Culture Olympic Towers, Corner Rabe and Biccadd Street, POLOKWANE and all Provincial Treasury Tender Advice Centre	Deposited in the bid box located in the main entrance of Olympic Towers, Corner 21 Rabe and Biccadd Street, Polokwane
109	LEDET	Tel: 015 293 8300 Fax: 015 293 8319 Website: www.limpopo.gov.za	Department of Economic Development, Environment & Tourism , 90 Bok Street, POLOKWANE and all SCM Advice Centers	Deposited in the bid box located in the main entrance of Evridiki Towers, 20 Hans Van Rensburg Street, Polokwane
110	LDPW & WODP	Tel: 015 284 7000 Fax: 015 284 7031 Website: www.limpopo.gov.za	Department of Public Works , Works Towers, 43 Church Street, POLOKWANE and all Provincial Treasury Tender Advice Centers	Deposited in the bid box located at Corner Blaawberg and River Street Ladanna Polokwane 0699 Private Bag X9490 Polokwane 0700
111	ACDP	Tel: 015 294 3000/30/60/90/20 Fax: 015 294 4506 Website: www.limpopo.gov.za	Department of Agriculture , Temo Towers, 69 Biccadd Street, POLOKWANE and all Provincial Treasury Tender Advice Centers	Deposited in the bid box located in the main entrance of AgriVillage, 69 Biccadd Street, Polokwane

ANNEXURE 2: ADDRESS LIST AND CONTACT DETAILS: LIMPOPO PUBLIC ENTITIES

UNIQUE REF. NO.	BID DOCUMENT REFERENCE	CONTACT DETAILS	DOCUMENTS SOLD AT:	DOCUMENTS DEPOSITED AT
112	RFB: LIMP	Tel: 015 293 3621 Fax: 015 293 3660 Website: www.golimpopo.co	State Information Technology Agency (SITA) Limpopo Office, Moolman Building, 27 Market Street, POLOKWANE, 0699	Bid box located in the Main Entrance of Moolman Building, 27 Market Street, Polokwane
113	LTA	Tel: 015 293 3600 Fax: 015 293 3655 Website: www.golimpopo.com	Limpopo Tourism Agency , ERF 92/688, Portion 2 Southern Gateway, Ext 4, N1 Main Road, Polokwane 0699	Bid box located in the offices ERF 92/688, Portion 2 Southern Gateway, Ext 4, N1 Main Road, Polokwane 0699
114	LGB	Tel: 015 295 5581 Fax: 015 295 3566 Website: www.lgb.org	Limpopo Gambling Board , 08 Hans van Rensburg Street, POLOKWANE, 0700 from 08H30 to 16H00	Bid box located in the main entrance, ground floor, 08 Hans van Rensburg Street, Polokwane 0700
115	LEDA	Tel: 015 633 4700 Fax: 015 633 4854 Website: www.leda.co.za	Limpopo Economic Development Agency Enterprise Development Finance, Main Road, Lebowakgomo	Bid box located in the main entrance, Enterprise Development Finance, Main Road, Lebowakgomo
116	RAL	Tel: 015 284 4600 Fax: 015 284 4701 Website: www.ral.co.za	Road Agency Limpopo (RAL) , RAL Towers, 26 Rabe Street, POLOKWANE, 0700	Bid box located in the entrance foyer (ground floor) of RAL Towers, at 26 Rabe Street, Polokwane
117	GAAL	Tel: 015 288 0122 Fax: 015 288 0346 Website: www.gaal.co.za	Gateway Airports Authority Limited , N1 Road to Louis Trichardt, Army Base, POLOKWANE International Airport, Polokwane, 0700	Bid box located in the main entrance, ground floor of administration building, Polokwane International Airport, Army Base
118	VIVET	Tel: 015 963 3156 Fax: 015 963 3154 Website: www.fetcol@mweb.co.za	Vhembe FET College , Stand No. 203, Unit A, Sibasa, 0970, Limpopo Province	Vhembe FET College, Central Office, Private Bag X2136, SIBASA 0970
119	WTVET	Tel: 015 491 8581 / 8602 Fax: 015 491 8579 Website: www.procurement@waterbergcollege.co.za	Waterberg FET College , Central Office, 36 Hooge Street, Mokopane 0600	Waterberg FET College , Central Office, 36 Hooge Street, Mokopane Private Bag X 2449, Mokopane 0600

ANNEXURE 3: ADDRESS LIST AND CONTACT DETAILS: PROVINCIAL TREASURY TENDER ADVICE CENTRES

(Tender bulletins and bid documents are obtainable from the following Centers):

PROVINCIAL TREASURY SUPPLY CHAIN MANAGEMENT ADVICE CENTRES	
<p>HEAD OFFICE</p> <p>Provincial Supply Chain Management Office 56 & 58 Paul Kruger Street POLOKWANE Private Bag x9494 POLOKWANE, 0700 Tel No. (015) 291 8400</p> <p>Contact: Ms. M.B. Malope @ Tel: 015 291 8717/6</p>	<p>Capricorn SCM Advice Centre</p> <p>Limpopo Provincial Treasury 56 & 58 Paul Kruger Street Private Bag x9494 POLOKWANE, 0700 Tel No. (015) 291 8400</p> <p>Contact Person: Ms. M.M. Masindi</p>
<p>Vhembe SCM Advice Centre</p> <p>Limpopo Provincial Treasury Government Building Complex Office No. E006 THOHOYANDOU, VENDA Tel: (015) 962 1752 Fax: (015) 962 1282</p> <p>Contact Person: Ms. A. Budeli</p>	<p>Mopani SCM Advice Centre</p> <p>Limpopo Provincial Treasury Private Bag X 1973 GIYANI, 0826 Tel: (015) 812 0149 Fax: 086 219 7905</p> <p>Contact Person: Mr. M. B. Mbedzi</p>
<p>Waterberg SCM Advice Centre</p> <p>Limpopo Provincial Treasury 98 Nelson Mandela Street Decimale Building MODIMOLLE Tel: (014) 717 5837 Fax: (014) 717 5670</p> <p>Contact Person: Mr. P.E. Mogoroga</p>	<p>Sekhukhune SCM Advice Centre</p> <p>Limpopo Provincial Treasury Lefa Centre, Schoonoord Road JANE FURSE Tel: (013) 265 1344 Fax: (013) 265 1354</p> <p>Contact Person: Mr. M.S. Sehale</p>

ANNEXURE 4: ADDRESS LIST AND CONTACT DETAILS: SATELLITE OFFICES

(Tender bulletins are obtainable from the following centers)

CAPRICORN	VHEMBE	MOPANI	WATERBERG	SEKHUKHUNE
Lebowakgomo LIBSA	Dzanani Revenue Office Tel. No. (015) 970 4969	Namakgale Revenue Office Tel. No. (015) 761 3119	LIBSA Thabazimbi: No.08 Riet Bok Street Tel. No. (014) 772 2437	Tubatse LIBSA Tubatse Municipality Tel. No. (013) 231 8530
Seshego (Economic Dev. Offices Zone 8) Tel. No. (015) 223 7990	Malamulele Revenue Office Tel. No. (015) 871 0608	Ritavi DCO Tel. No. (015) 303 0455	LIBSA Lephalale No. 3A Venter Street Tel. No. (014) 763 2834	Fetakgomo LIBSA Fetakgomo Municipality Tel. No. (015) 622 8904
Ga-Thoka (Department of Economic Development)	Musina Revenue Office Tel. No. (015) 534 2713	Naphuno Magistrate Office Tel. No. (015) 355 4972	Bela-Bela Local Municipality (Bela-Bela) Tel. No. (014) 736 8000	Atok Thusong Service Centre Atok
Senoamadi Complex-Morebeng next to Taxi Rank-Economic Development Offices Contact Mr. Pheha @ 084 602 423	Mutale Revenue Office Tel. No. 072 252 7153	Lulekani Magistrate Offices Tel. No. (015) 783 0486	Mookgophong Local Municipality (Mookgopong) Tel. No. (014) 743 1111	Maatla-ke batho LIBSA Marblehall Tel. No. (013) 261 2642
Bochum: LIBSA	Soutpansberg Revenue Office Tel. No. (015) 516 0002	Economic Development Offices in Tzaneen 20b Peace Street, Cnr Peace and Hermanus Tel. No. (015) 307 1195	LIBSA Mokopane 90 Retief Street Tel. 015 491 8582 Fax: 015 491 8584	SEDA Groblersdal Tel. No. (013) 262 3651
Mathabatha Tribal Authority Ga-Mathabatha	Tshilwavhusiku Revenue Office (015) 571 5277	Bolobedu Revenue Office Tel. No. (015) 328 3377		
Mafefe Tribal Authority MAFEFE	Tshitale Revenue Office Tel. No. (015) 975 1717	Hlanganani Revenue Office operating within Khomanani Tribal Authority at Majosi. Tel. No. 072 304 3916		
	Vuwani- Revenue Office Tel. No. 072 058 1910			